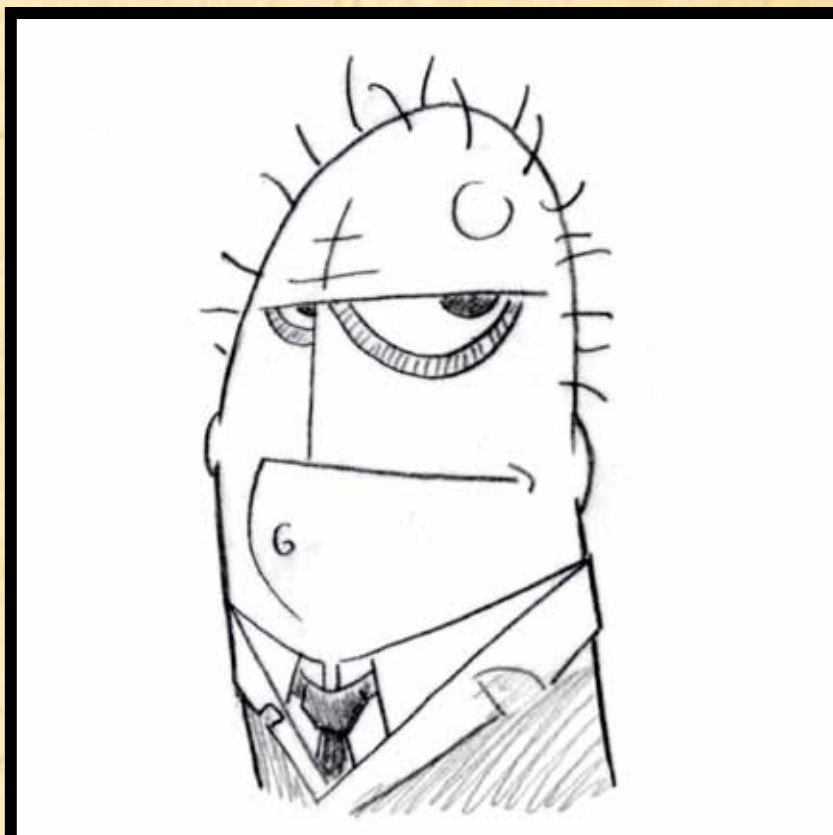
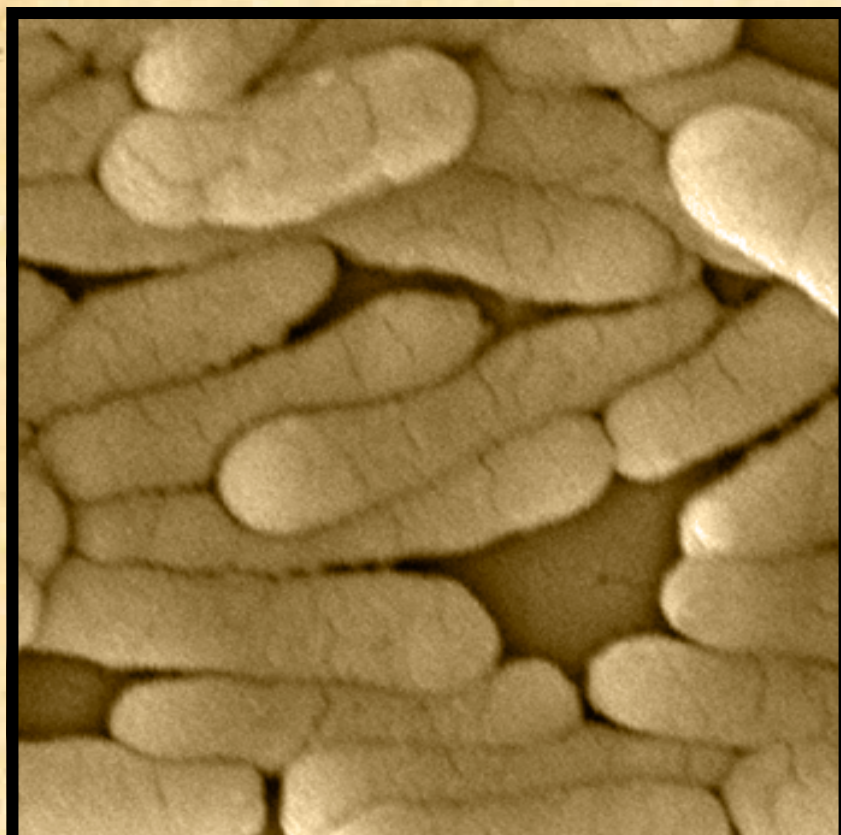


WANTED



SAL MONELLA

Salmonella spp.

IDENTIFYING CHARACTERISTICS

Bacterium. Gram negative. Rod-Shaped.
Length = 2 microns.

Intestinal tracts of birds and animals. Undercooked meats. Mishandled or misprepared foods. Reptile cages.

LAST KNOWN HIDEOUTS

CRIMINAL RECORD

Most common cause of foodborne illness (45,000 cases reported each year in the US??), 2009 outbreak in peanut butter and pistachios.

WARNING

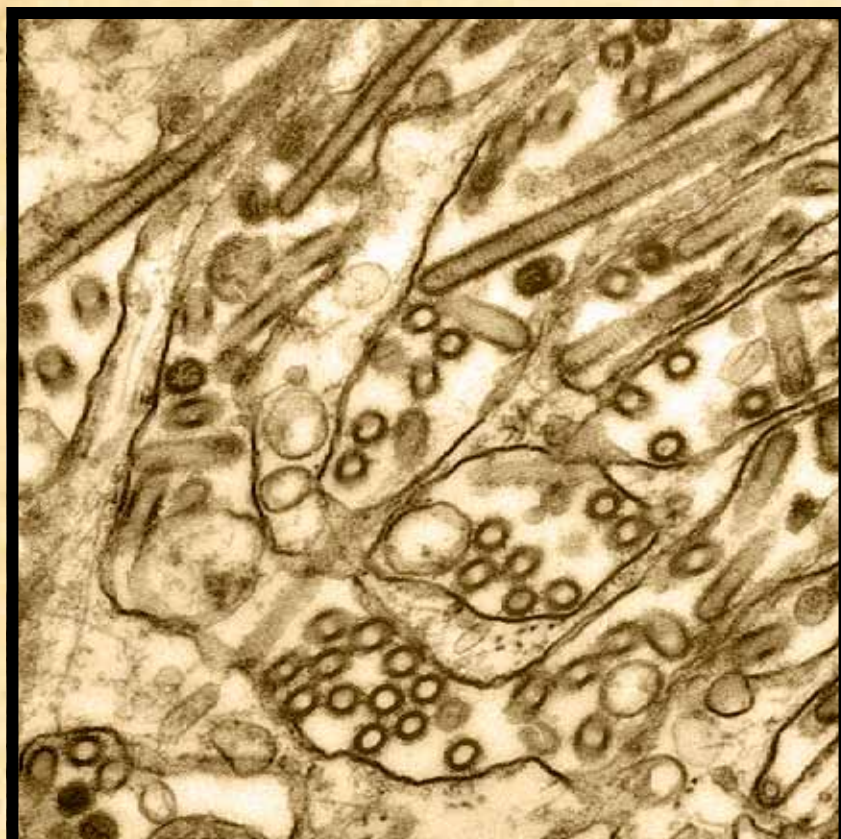
Wash hands and surfaces thoroughly. Avoid cross-contamination. Cook foods to safe temperatures. Refrigerate foods properly.

ARMED AND DANGEROUS

- Suspect produces toxins that destroy cells in the intestines in order to evade the host immune response. Potential for use as a biological weapon.

IF CONTACTED SEEK MEDICAL ATTENTION

WANTED



AVIA N. FLUENZA

Avian Influenza

IDENTIFYING CHARACTERISTICS

Enveloped RNA virus. Filamentous.
Length = 200-300 nanometers.
Width = 20 nanometers.

Wild and domesticated bird saliva and feces. Last seen in Asia.

LAST KNOWN HIDEOUTS

CRIMINAL RECORD

Infects domesticated and wild birds (millions culled).
Infected and killed over 100 humans.

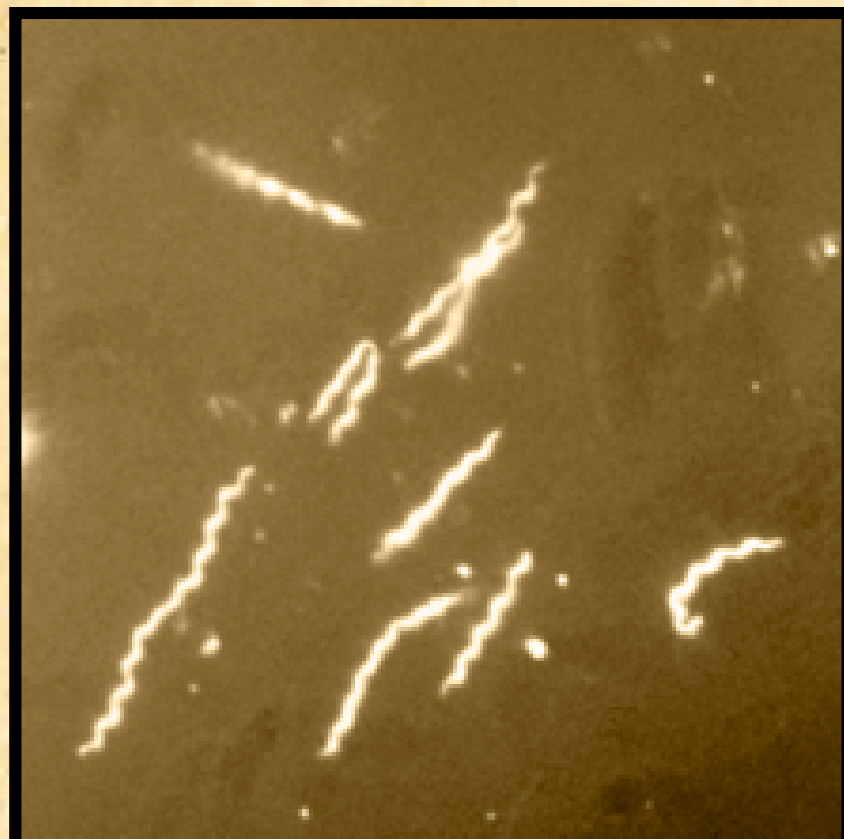
WARNING

Wash hands well. Use caution when in direct or close contact with birds.

ARMED AND DANGEROUS - Suspect uses specialized proteins to attach to the host respiratory tract. Suspect evolves rapidly and continuously, developing resistance to current antiviral medications.

IF CONTACTED SEEK MEDICAL ATTENTION

WANTED



BORRELIA BURG-DORFERI

Borrelia Burgdorferi

IDENTIFYING CHARACTERISTICS

Bacterium. Length = 20-30 micrometers.
Width = 0.2-0.3 micrometers.
Spiral-shaped.

Mode of transport = deer tick.
Rodents and small animals. Deer
(carrier, not infected).

LAST KNOWN HIDEOUTS

CRIMINAL RECORD

1883 - First recorded infection • 1975 - Outbreak
in Old Lyme, CT • 2007 - Infected over 25,000 •
Number of infections increases each year.

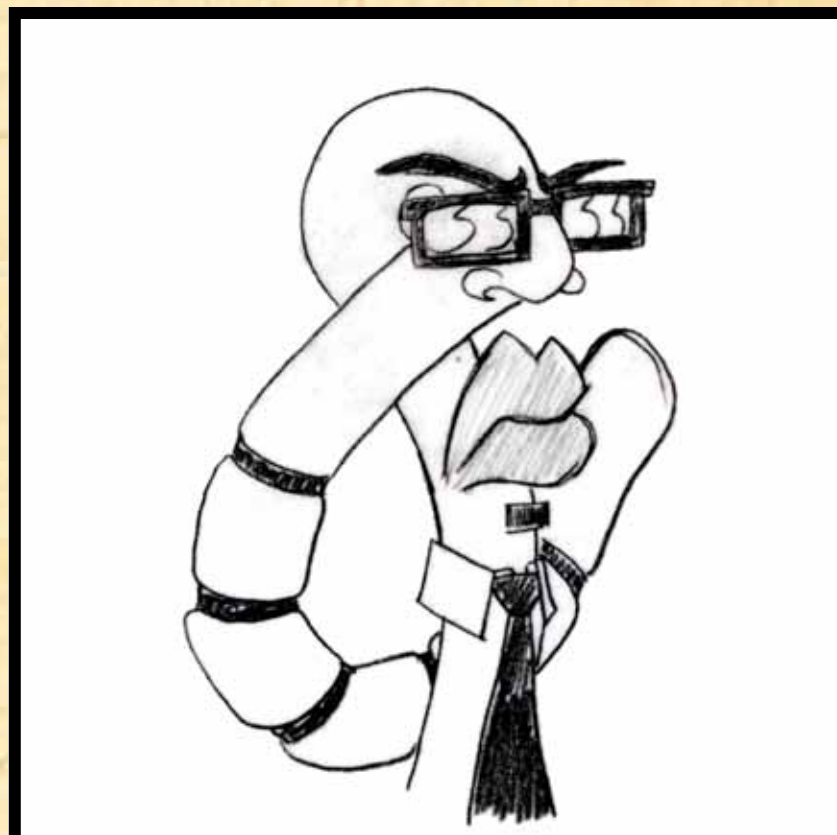
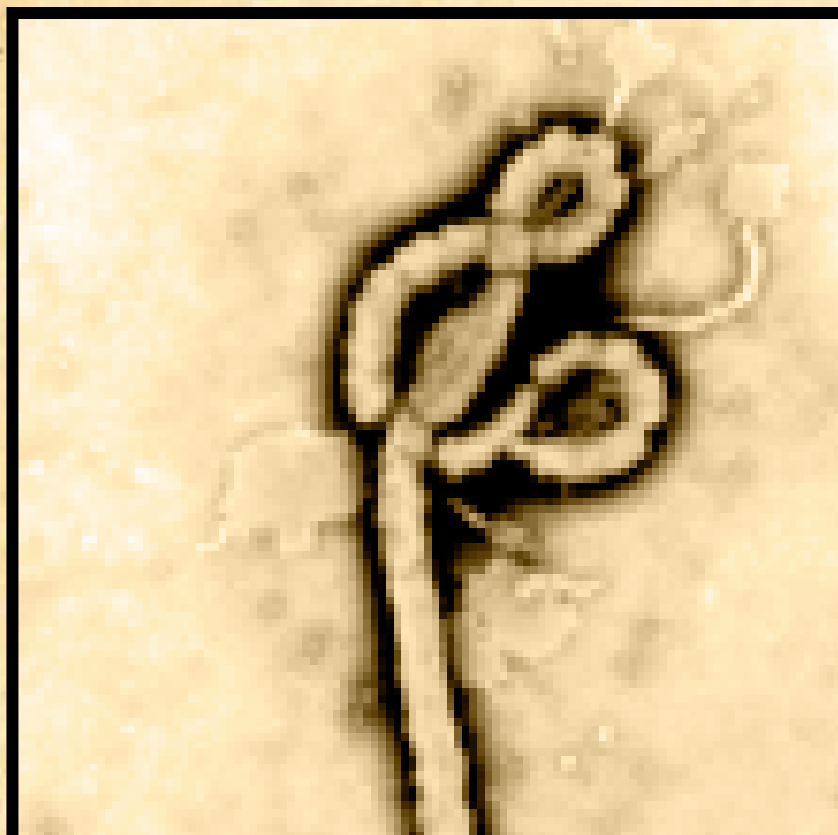
WARNING

Avoid contact with ticks: Avoid wooded or bushy areas, especially in
Spring and Summer. Use insect or tick repellent. Wear long pants in
the woods. Frequently check skin and clothing for ticks.

DANGEROUS - Without treatment, suspect capable of causing disabling, long-term infection.

IF CONTACTED SEEK MEDICAL ATTENTION

WANTED



EBO LA

Ebolavirus

IDENTIFYING CHARACTERISTICS

Negative-strand RNA virus. Filamentous.
Length = 1000-1400 nanometers.
Width = 80 nanometers.

Origin unknown. Suspected animals - bats and primates. Last seen on the African continent

LAST KNOWN HIDEOUTS

CRIMINAL RECORD

1970s - 1st outbreak in the Democratic Republic of Congo. Sporadic and deadly outbreaks in Africa. Strain (non-lethal to humans) identified in the United States.

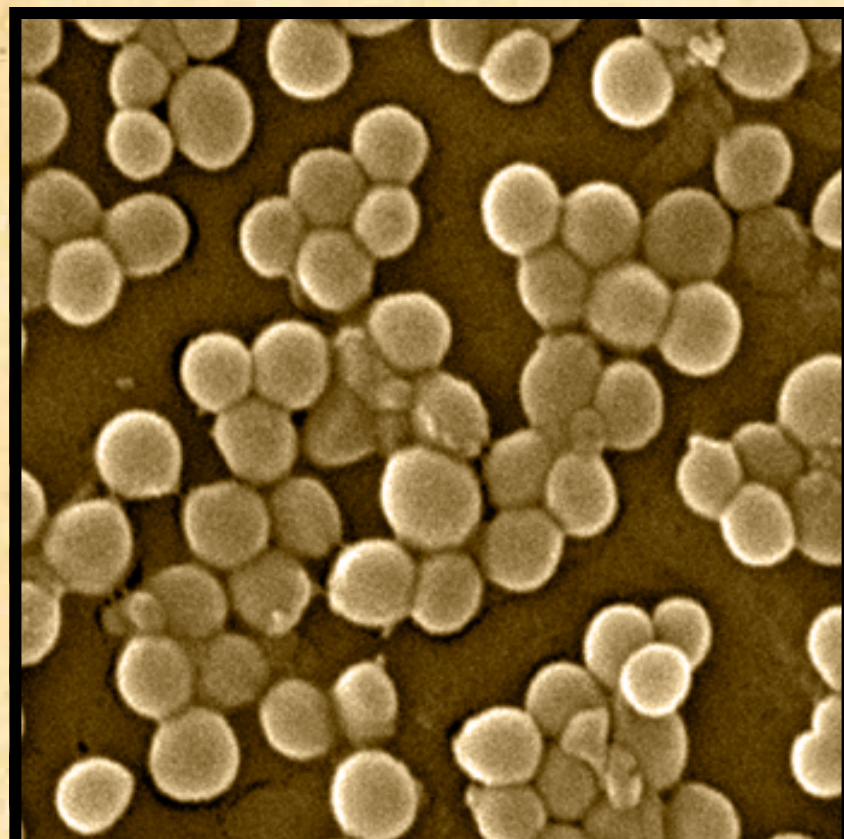
WARNING

Infection is severe - 80% fatal. Avoid contact with infected individuals. Health Care workers must use proper infection control procedures.

ARMED AND EXTREMELY DANGEROUS - Suspect damages host vascular system causing excessive bleeding. Potential for use as a biological weapon.

IF CONTACTED SEEK MEDICAL ATTENTION

WANTED



MRS. A

Methicillin-resistant Staphylococcus aureus

IDENTIFYING CHARACTERISTICS

Bacterium. Gram positive. Spherical.
0.5-1.5 micrometers in diameter. Grow
in clusters.

Humans as part of the normal
flora. Hospitals. Nursing facilities.
Schools. Locker rooms.

LAST KNOWN HIDEOUTS

CRIMINAL RECORD

Cause of over 60% of hospital Staphy infections.
Over 94,000 infections in humans each year. Nearly
19,000 deaths.

WARNING

Wash hands well. Cover and clean cuts and scrapes. Avoid sharing
personal items.

ARMED AND DANGEROUS - Suspect produces slime that allows adherence to surfaces and
resists antibiotic treatments. Arsenal of toxins and enzymes to damage cells and evade the host
immune response.

IF CONTACTED SEEK MEDICAL ATTENTION